

Portacicli · Bicycle racks

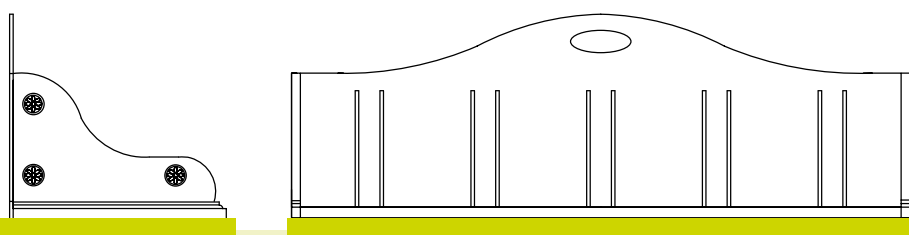
Greg

.54



**Portabicidette realizzato
in lamiera di acciaio e fusione
in ghisa.**

Bicycle racks in steel sheet
and cast iron.



Greg

h 550 · 1.750 x 600 mm



Portabiciclette realizzato in ghisa monoblocco di forma conica. Versione rimovibile su richiesta.

Conical cast iron bicycle rack.
Removable version on request.



Versione rimovibile su richiesta
Removable version is available upon request
Version amovible sur demande

900
h 990 · Ø 160 mm

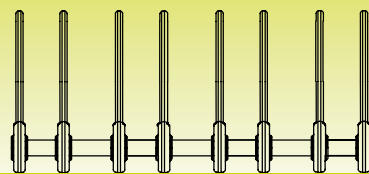
Rotondo

.56

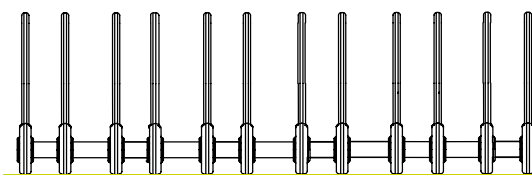
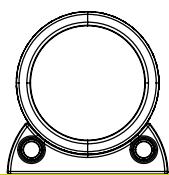


Portabicidette realizzato in lamiera di acciaio e fusione di ferro. Disponibile in due versioni [4 - 6].

Bicycle racks in steel sheet and iron. Available in two versions [4 - 6].



Rotondo [4]
h 348 · 1.300 x 342 mm

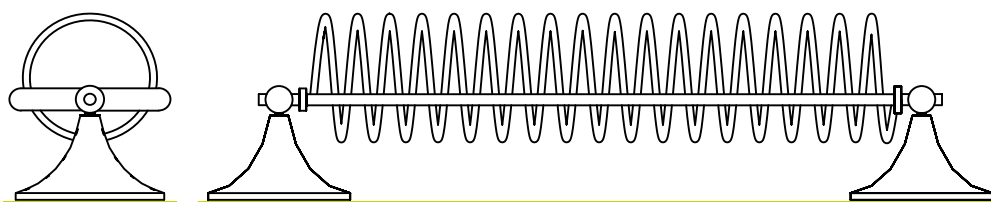


Rotondo [6]
h 348 · 2.080 x 342 mm



Portabiciclette realizzato in lamiera di acciaio e fusione di ghisa.

Bicycle racks in steel sheet and cast iron.



Duomo

h 440 · 2.320 x 450 mm